

Tam Fleet manager is a simple yet intuitive web application that provides a full, end-to-end Fleet management platform for fleet-based companies of all sizes. It enables the company to manage vehicles and drivers, manage inventory, keep a track of income and expenses and get detailed periodical reports. This efficient web application would ease the task of managing complex tasks related to companies in the transportation business.

What is Fleet Manager?

Fleet manager is a simple yet intuitive web application that provides a full, end-to-end Fleet management platform for fleet-based companies of all sizes. It enables the company to manage vehicles and drivers, manage inventory, keep a track of income and expenses and get detailed periodical reports. This efficient web application would ease the task of managing complex tasks related to companies in the transportation business.

Main Features

- Easily manage and track drivers
- Efficiently manage vehicles
- Bookings Management
- Track inflow and Outflow of vehicle parts. (Inventory Management)
- Manage and track income and expenses.
- Track fuel up on vehicles
- Vehicle Insurance Details
- Purchase Details
- Reminder notifications for licence and insurance renewals
- Get detailed periodic cash flow reports.
- Interactive Charts to Visualize Reports.
- Custom Service Reminder for Each Vehicle
- Invoice/Receipt for Completed Bookings
- Completely New Design with simple look
- Languages Supported: English, German, Spanish, French, Portuguese.

Previews



Simple Dashboard

Simple, easy-to-use and highly responsive dashboard that provides powerful performance and can be used even by a person who is not tech savvy.

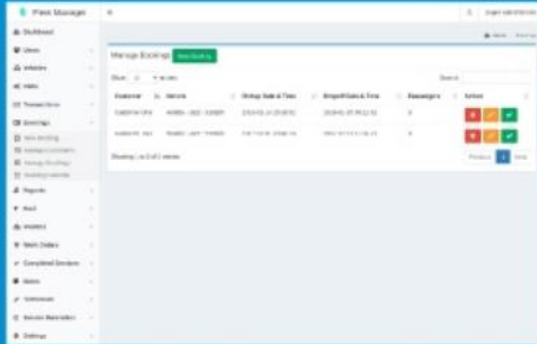
Efficient Management

The screenshot shows the 'Manage Vehicles' interface. It includes a search bar, a table of vehicles, and a sidebar with navigation options. The table has the following data:

Vehicle Make	Vehicle Model	Vehicle Type	Color	License Plate	Equip	In-Service?	Action
Hyundai	2022	TRUCK	RED	HLK226	Default	YES	[Edit] [Delete] [Add]
Toyota	2020	TRUCK	WHITE	124567	Default	YES	[Edit] [Delete] [Add]

Easily add, update, delete or assign vehicles and drivers. Manage parts inventory and efficiently track drivers, vehicles and inventory inflows & outflows.

Easily add, update, delete or assign vehicles and drivers. Manage parts inventory and efficiently track drivers, vehicles and inventory inflows & outflows.



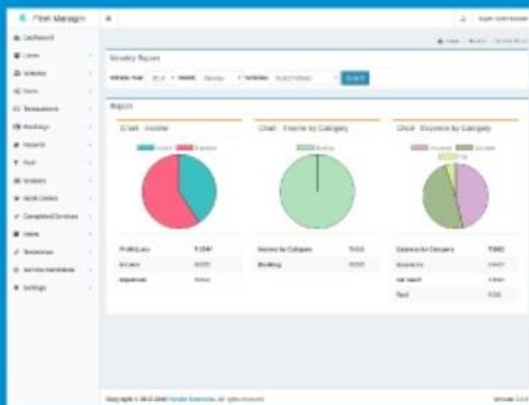
Bookings Management

Enabled you to add vehicle bookings for journeys. You can easily manage available vehicles and see which vehicle is booked on which date and the customer booked it.



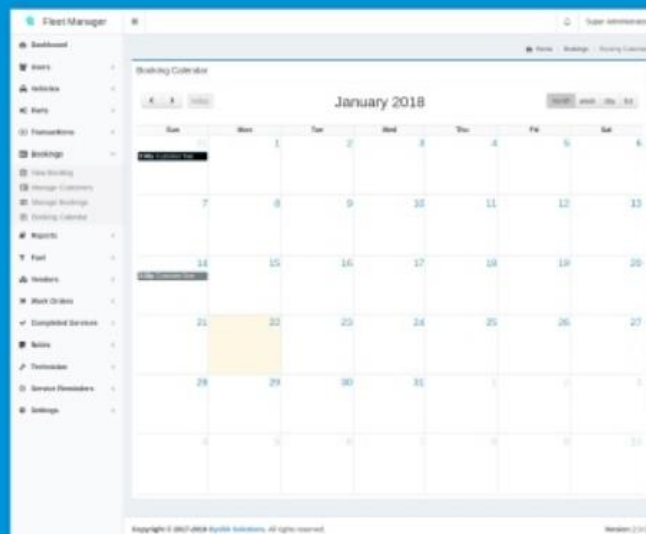
Cash flow Management

Input income and expenses related to day-to-day activities. This will enable you to keep a track of cash inflow and outflows.



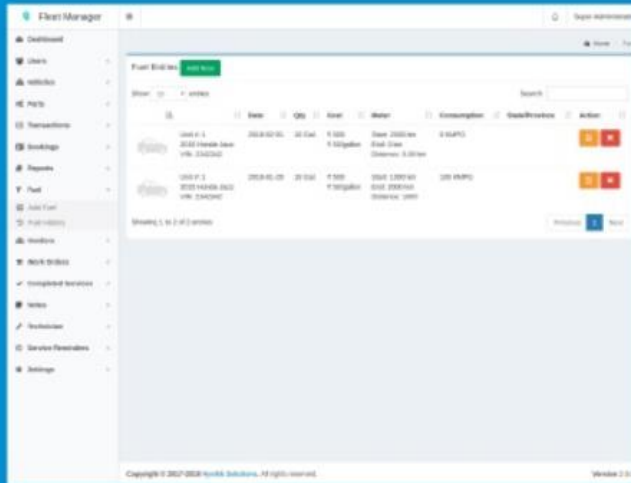
Comprehensive Reports

Get a detailed report with charts of all the vehicles, individually or Collectively. You can set the frequency of the report as per your convenience – Daily, weekly or Monthly.



Calendar View for Bookings

You can get Calendar view of Month, Week, Day, List of the Bookings of the Fleet. When you click on it, it will show you popup with all the booking details of that event.



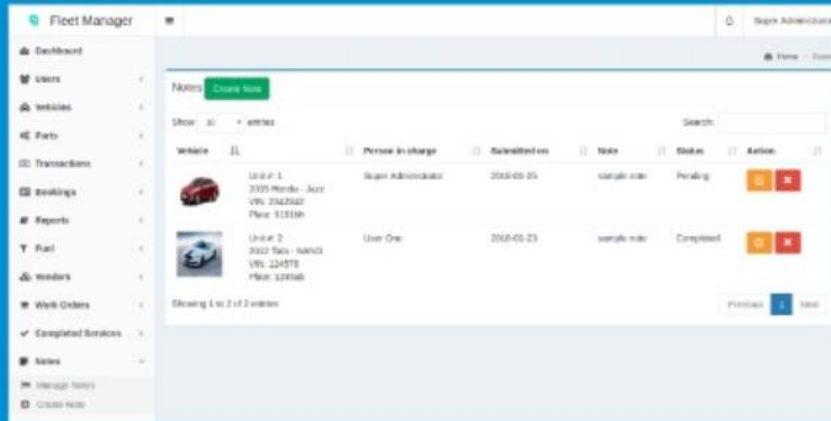
Fuel Management

Keep track of your spending on fuel and know the effective mileage your vehicle performs on.



Notifications

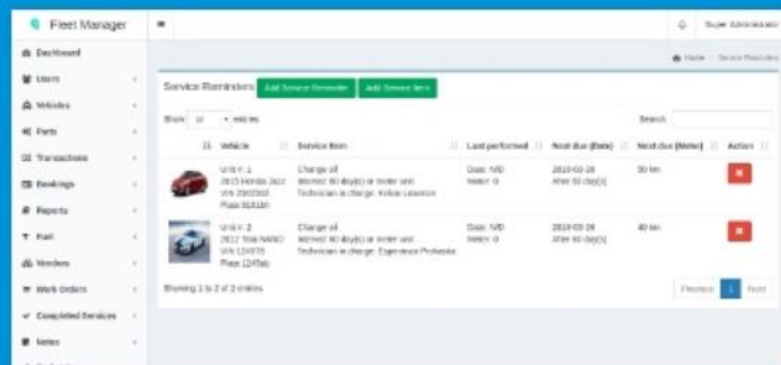
Get licence and insurance expiration notifications for drivers and vehicles, Never miss to renew your licences and insurances now.



Notes

You can save notes about vehicles and parts and you can assign them to drivers and you can change status of the notes.

Service Reminders



Fleet Manager Super Administrator

Work Orders [Create Work Order](#)

Show + items Search

Vehicle	Created on	Registered by	Person/Order in charge	Description	Status	Action
2012 Tata - Nano VIN: L20170 Plate: 120500	2018-01-05	2018-01-05	Technician: Felix Leonard Vendor: inquiry visit	Sample work order	Completed	+
2015 Honda - Jazz VIN: 2342342 Plate: 100101	2018-01-05	2018-01-05	Technician: Esperanza Prokosta Vendor: Dr. Lincoln Torres	Sample work order	Pending	+

Showing 1 to 2 of 2 entries Previous [1](#) Next

Work Orders

You can create work orders for your vehicles and also assign specific technician for that. you can easily track everything related to your vehicles.